

UPHD PSN

Universal Pump Hold Down Pump Seating Nipple

The UPHD (Universal Pump Hold Down) PSN is used to seat either a sucker-rod or progressive cavity pump without pulling the production tubing UPHD Pump Seating Nipple.

APPLICATION

- Hold down system for artificial lift

BENEFIT

- Flexibility between Rod Insert and PCP Insert Pump
- Change pump without removing tubing from well

FEATURES

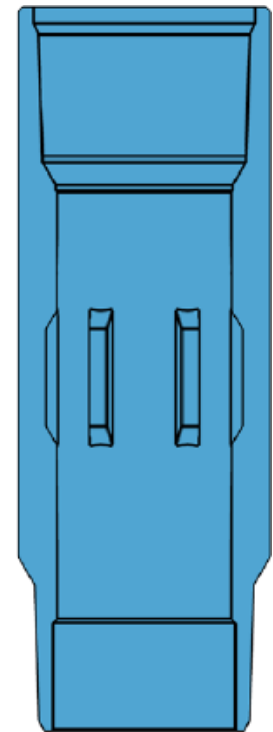
- Full selective nipple I.D.
- Flexible connection options
- Suitable for deviated wellbores and sour environments

The internal profile of these nipples include an upper no-go, a seal bore and internal pockets to prevent rotation for the PC pump application.

DESCRIPTION AND OPERATION

For either a sucker-rod or progressive cavity pump the installation is very simple – set down to install, and straight pull to retrieve – no additional manipulation of the rod string is required. The axial force can be adjusted to suit the application.

The design can be easily customized for any given tubing diameter, allowing full selective nipple I.D. and is suitable for deviated wellbores and sour environments. The design features a one piece nipple and inner mandrel with field proven metal-to-metal seals. The hold down mechanism has been carefully designed to provide reliable operation and release in the presence of sand and other solids.



Tubing Size	Thread Weight	Connection	PSN OD	Seal Bore
3.500 [88.9mm]	9.30 lbs/ft	EUE	4.500 [114.3mm] max	2.790 [70.87mm]
4.500 [114.3mm]	12.75 lbs/ft	EUE	5.563 [114.3mm] max	3.790 [96.27mm]
4.500 [114.3mm]	12.60 lbs/ft	Buttress	5.200 [132.1mm] max	3.790 [96.27mm]
4.500 [114.3mm]	12.60 lbs/ft	Hydril	5.200 [132.1mm] max	3.790 [96.27mm]
5.500 [139.7mm]	17.00 lbs/ft	LTC	6.050 [153.7mm] max	4.562 [115.87mm]

DistributionNOW has produced this for general information only, and it is not intended for design purposes. Although every effort has been made to maintain the accuracy and reliability of its contents, DistributionNOW in no way assumes responsibility for liability for any loss, damage or injury resulting from the use of information and data herein. All applications for the material described are at the user's risk and are the user's responsibility.