



Capture 100% of the Production Stream

Removes oxygen from the production stream to eliminate emissions and increase production.

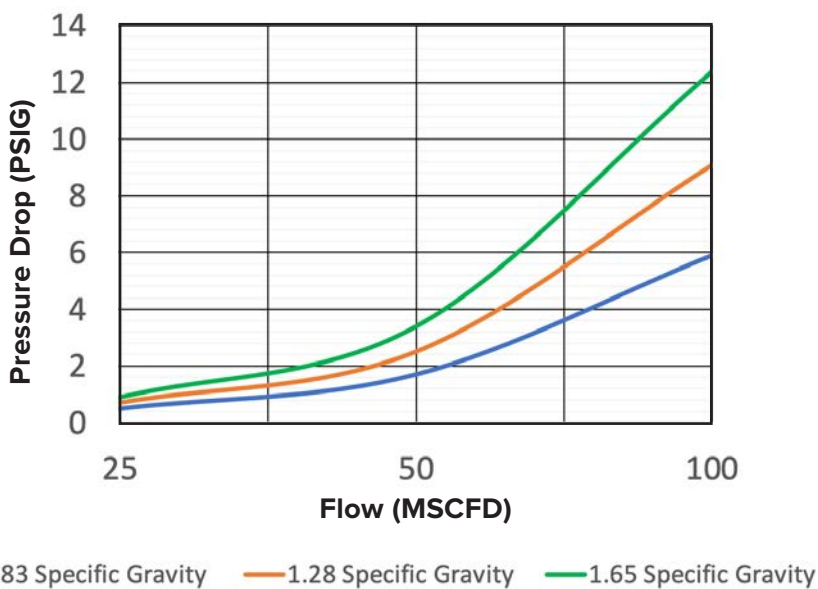
- Increased cash flow from higher recovery
- Allows the potential for zero emission sites
- Avoid shut-ins of gas sales
- 24-hour remote monitoring
- Over 200 installations in all major basins
- No moving parts



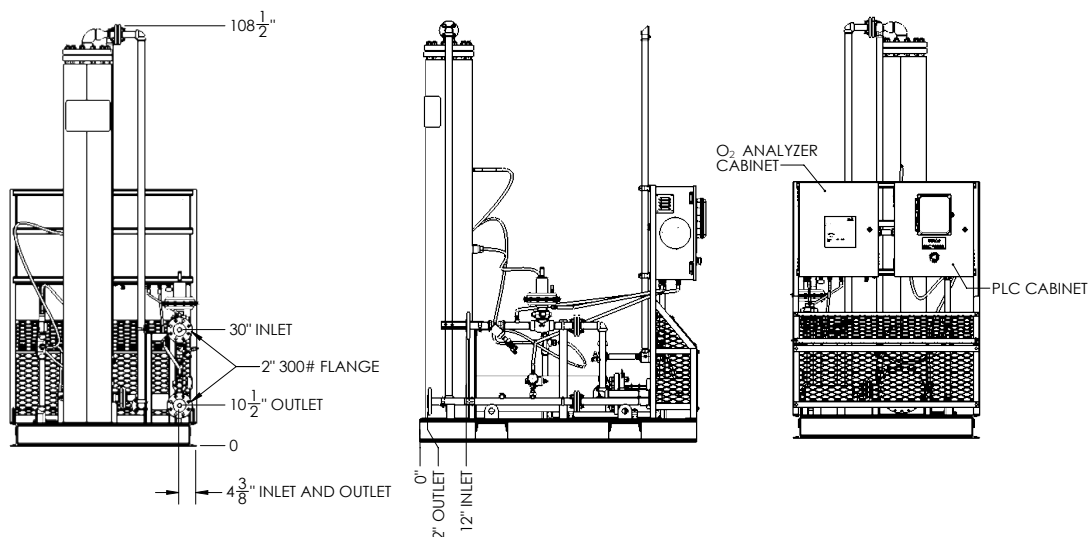
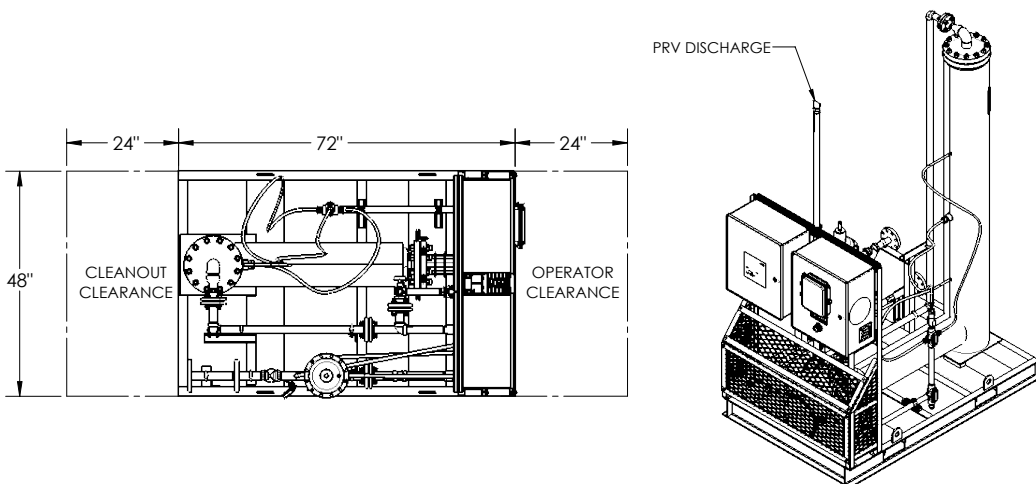
ZerO₂ E100 Specifications

Flow Capacity	100 MSCFD
Turndown.	10 : 1
Standard System MAWP	80 PSIG at 800F
System MAWP w/ High Pressure Package	250 PSIG at 800F
Typical Pressure Drop.	10 PSIG
Max O ₂ at Inlet	35,000 ppm, 50,000 ppm intermittent
Typical O ₂ at Outlet	0-5 ppm
Max H ₂ S at Inlet	2 ppm
Power Draw (Startup).	12 kW, 15A
Power Draw (Nominal).	8 kW, 9.6A
Skid Hazard Classification	C1D2 (excl. control panel)
Power Requirements	3/60/480VAC, 15A
480V Power Panel.	remote-mounted, not rated for hazloc
Inlet/Outlet.	2" ANSI 300# RFF
Dimensions	4' w, 6' d, 9' h
Weight	Approximately 1,450 lbs
Reactor Maintenance	Annually

ZerO2 E100 Pressure Drop at 50 PSIG Discharge Pressure



**Contact EcoVapor Engineering for ZerO₂ E100 pressure drop at different discharge pressures.*



Corporate Office

1442 Delgany St. Suite 100
Denver, CO 80202

Field Offices

1804 Cherry Ave.
Greeley, CO 80631

915 Goode St.
Midland, TX 79701

info@EcoVaporRS.com

1-844-No-Flare
(844.663.5273)